

**2013 Science Symposium for the South Bay
Salt Pond Restoration Project**



Getting ahead of Sea Level Rise: use of upland fill material
Eric Mruz



1.5M cy. needed





Area D

© 2013 Google

Google earth

Imagery Date: 10/31/2011 37°30'08.41" N 122°13'59.65" W elev 2 ft eye alt 6333 ft

Dredge Material



Pilot Project



500 trucks per day





Monitoring

Truck Logs

rec...	borrow_site	truck_name	truck_n...	truck_loads									date	monitor	fill_siti			
13	Packard 1	Gageet Singh	207	751	902	953	1046	1146	1259	150	311	415				4/21/201	Ishmael Elias	Bair Islanc
14	Packard 1	Leon Bros	356	755	905	1000	1047	1150								4/21/201	Ishmael Elias	Bair Islanc
15	Packard 1	DST	313	758	905	1008	1102	1208	105	207	308	415				4/21/201	Ishmael Elias	Bair Islanc
16	Packard 1	Amezcuca	374	801	905	1010	1109	1218	117	218	320	438				4/21/201	Ishmael Elias	Bair Islanc
17	Packard 1	Tai	302	801	910	1230										4/21/201	Ishmael Elias	Bair Islanc
18	Packard 1	Escobar	319	804	910	1013	1117	1218	127	234	336	443				4/21/201	Ishmael Elias	Bair Islanc
19	Packard 1	Campos	215A	807	917	1020	1121	1224	137	235	336	434				4/21/201	Ishmael Elias	Bair Islanc
20	Packard 1	Gill Bros	347A	809	920	1017	1117	1223	133	235	340	434				4/21/201	Ishmael Elias	Bair Islanc
21	Packard 1	Johnny Ho	317	809	920	1017	1117	1223	127	222	320	420				4/21/201	Ishmael Elias	Bair Islanc
22	Packard 1	Campos	236	809	920	1021	1128	1234	137	236	340					4/21/201	Ishmael Elias	Bair Islanc
23	Packard 1	TVN	322	811	923	1021	1128	1234								4/21/201	Ishmael Elias	Bair Islanc
24	Packard 1	D&N	306	813	925	1029	1128	1238	142	306	405					4/21/201	Ishmael Elias	Bair Islanc
25	Packard 1	Carters	208	820	925	1022	1128	1234	142	258	400					4/21/201	Ishmael Elias	Bair Islanc
26	Packard 1	Sonny	203	820	934	1041	1137	1238	147	258	350					4/21/201	Ishmael Elias	Bair Islanc
27	Packard 1	Cordova	391	820	924	1017	1117	1224	127	258	400					4/21/201	Ishmael Elias	Bair Islanc
28	Packard 1	Max	260	825	934	1036	1137	1247	150	308	415					4/21/201	Ishmael Elias	Bair Islanc
29	Packard 1	Campos	215	825	925	1015	1121	1221	130	235	331	430				4/21/201	Ishmael Elias	Bair Islanc
30	Packard 1	GS	318	825	932	1036	1146	1259	150	305	415					4/21/201	Ishmael Elias	Bair Islanc
31	Packard 1	AM	273	825	936	1036	1137	1234	137	232	331	430				4/21/201	Ishmael Elias	Bair Islanc
32	Packard 1	Van	299	828	934	1020	1128	1223	129	230	331	430				4/21/201	Ishmael Elias	Bair Islanc
33	Packard 1	Vinh	285	830	941	1047	1114									4/21/201	Ishmael Elias	Bair Islanc
34	Packard 1	NC	288	836	941	1047	1157									4/21/201	Ishmael Elias	Bair Islanc
35	Packard 1	LN	249	836												4/21/201	Ishmael Elias	Bair Islanc
36	Packard 1	LT	233	836	950	1155	102	213	320	421								
37	Packard 1	Panda	232	840														
38	Packard 1	Michael	219	848														
39	Packard 1	Simon	293	848														
40	Packard 1	TNT	235	851														
41	Packard 1	TL	268	851														
42	Packard 1	Dzung	208	851														
43	Packard 1	Lam	256	910	1008	1112	1215	117	220	321								
44	Packard 1	DC	392	915	1020	1121	1223	127	232	33								

Date 4/21/2012
Monitor Ishmael Elias
Borrow Packard 1
Truck Van
Number 299
Record 32

Truck Loads
 828
 934
 1020
 1128
 1223
 129
 230
 331
 430

Total Loads
 295

South Bay Salt Pond Restoration Project

Project Areas

Lands Sold to Local Government

Reference Features

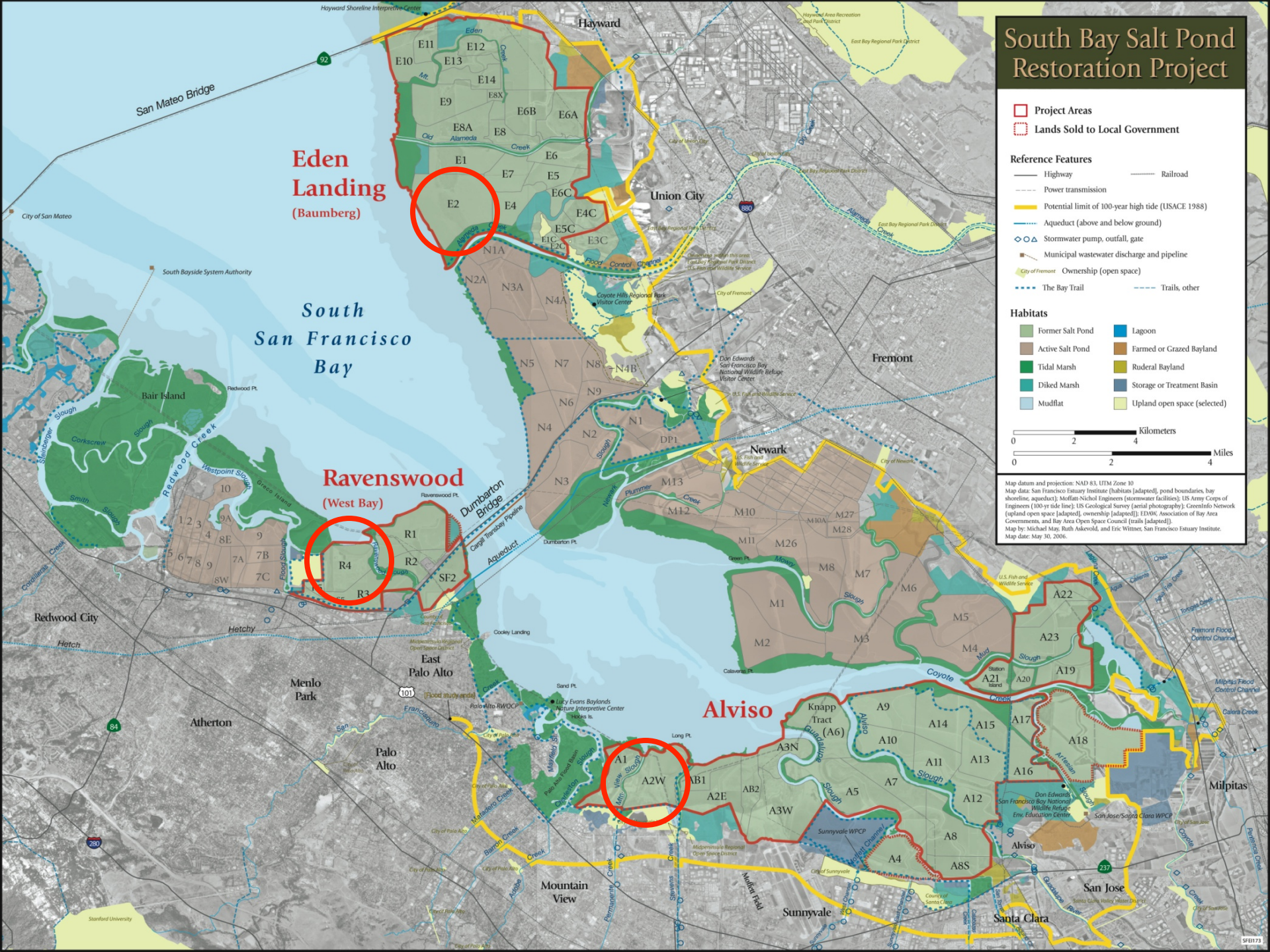
- Highway
- Power transmission
- Potential limit of 100-year high tide (USACE 1988)
- Aqueduct (above and below ground)
- Stormwater pump, outfall, gate
- Municipal wastewater discharge and pipeline
- City of Fremont
- City of Fremont
- Ownership (open space)
- The Bay Trail
- Trails, other

Habitats

- Former Salt Pond
- Active Salt Pond
- Tidal Marsh
- Diked Marsh
- Mudflat
- Lagoon
- Farmed or Grazed Bayland
- Ruderal Bayland
- Storage or Treatment Basin
- Upland open space (selected)

0 2 4 Kilometers
0 2 4 Miles

Map datum and projection: NAD 83, UTM Zone 10
 Map data: San Francisco Estuary Institute (habitats [adapted], pond boundaries, bay shoreline, aqueduct); Moffatt-Nichol Engineers (stormwater facilities); US Army Corps of Engineers (100-yr tide line); US Geological Survey (aerial photography); Correlatio Network (upland open space [adapted], ownership [adapted]); EDAW, Association of Bay Area Governments, and Bay Area Open Space Council (trails [adapted]).
 Map by: Michael Moss, Ruth Adcock, and Eric Wimmer, San Francisco Estuary Institute.
 Map date: May 30, 2006.

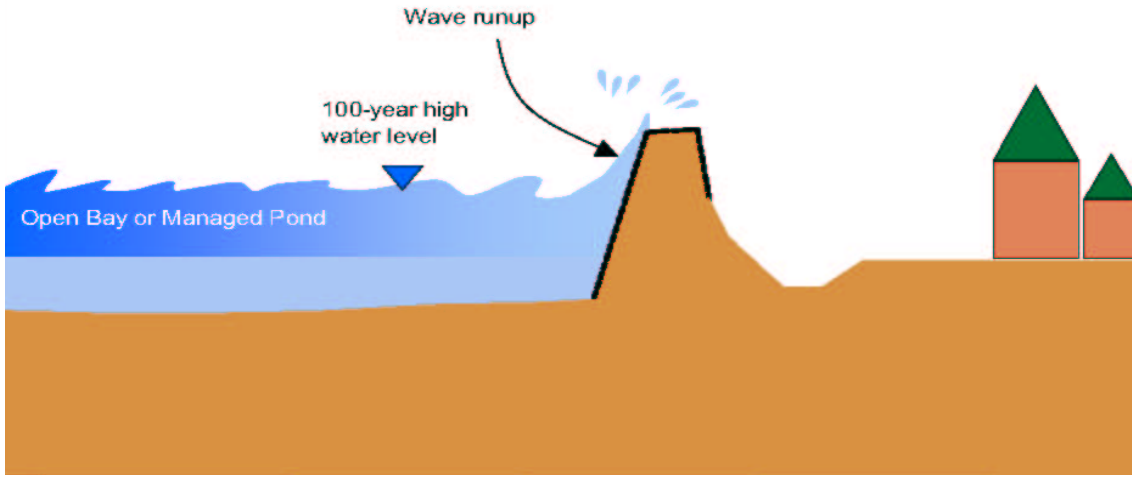


**Eden Landing
(Baumberg)**

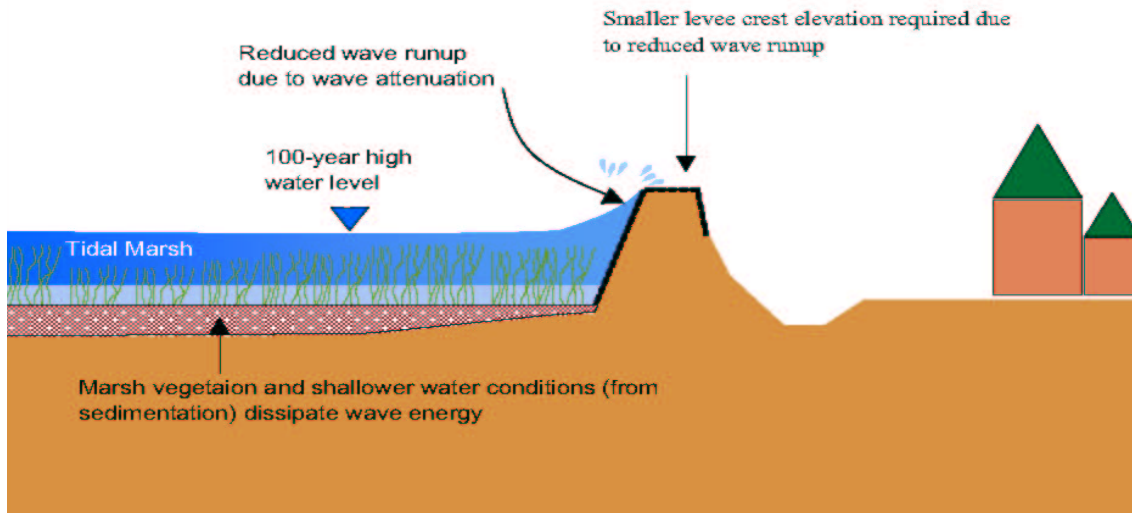
**Ravenswood
(West Bay)**

Alviso

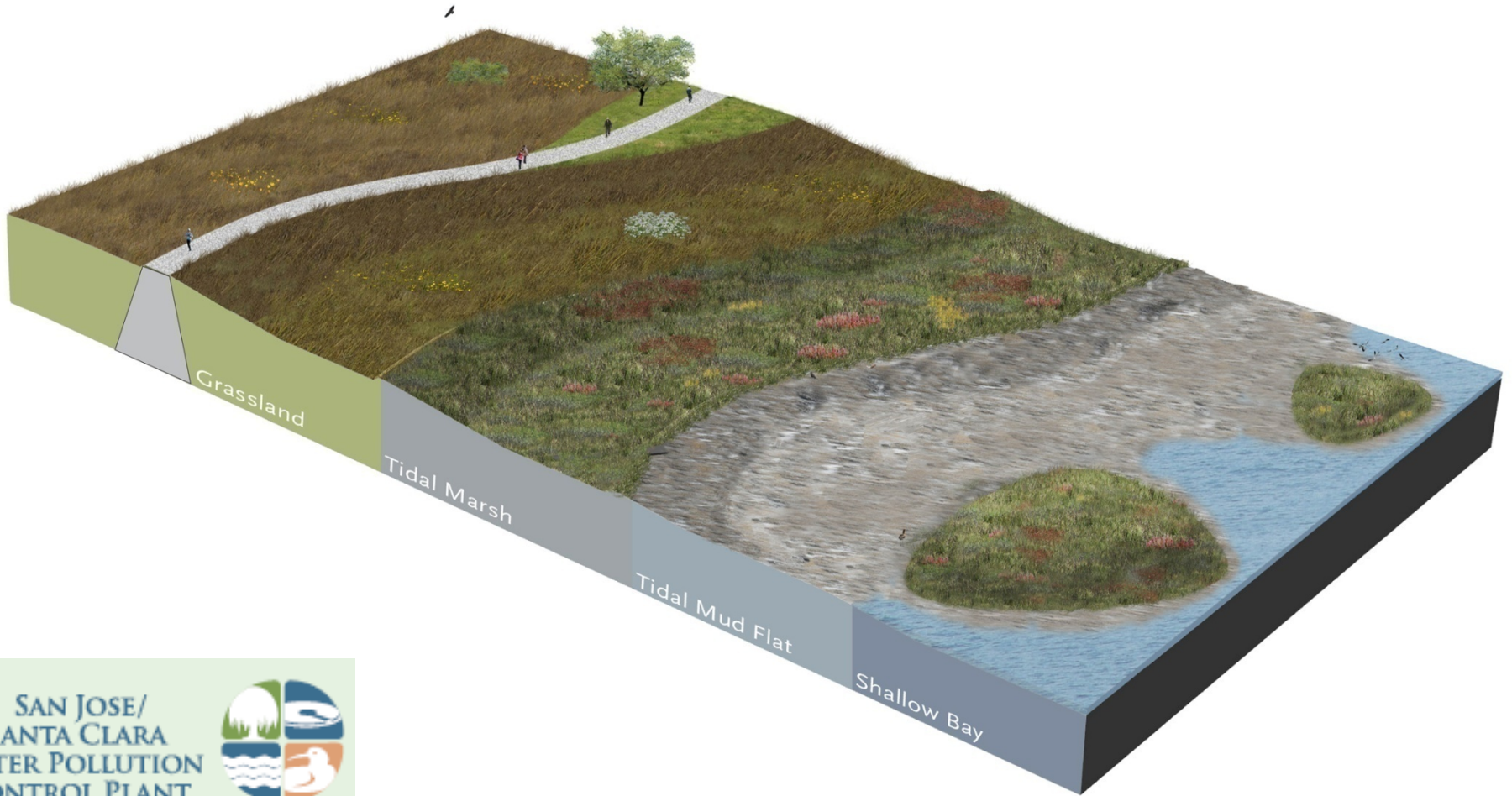
Levee Adjacent to Open Water



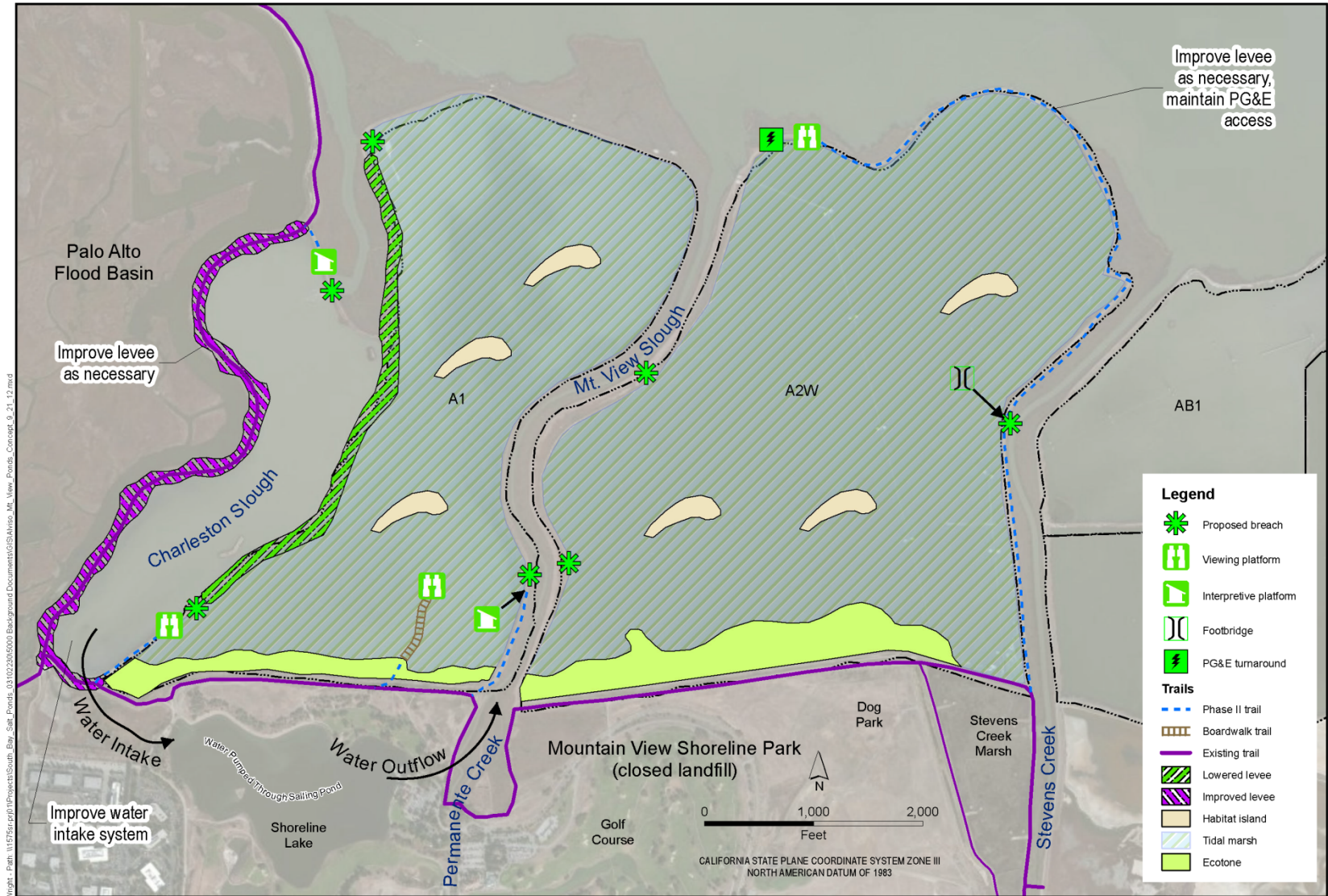
Levee Adjacent to Tidal Marsh



“Horizontal Levee”



::: Hargreaves Associates :::



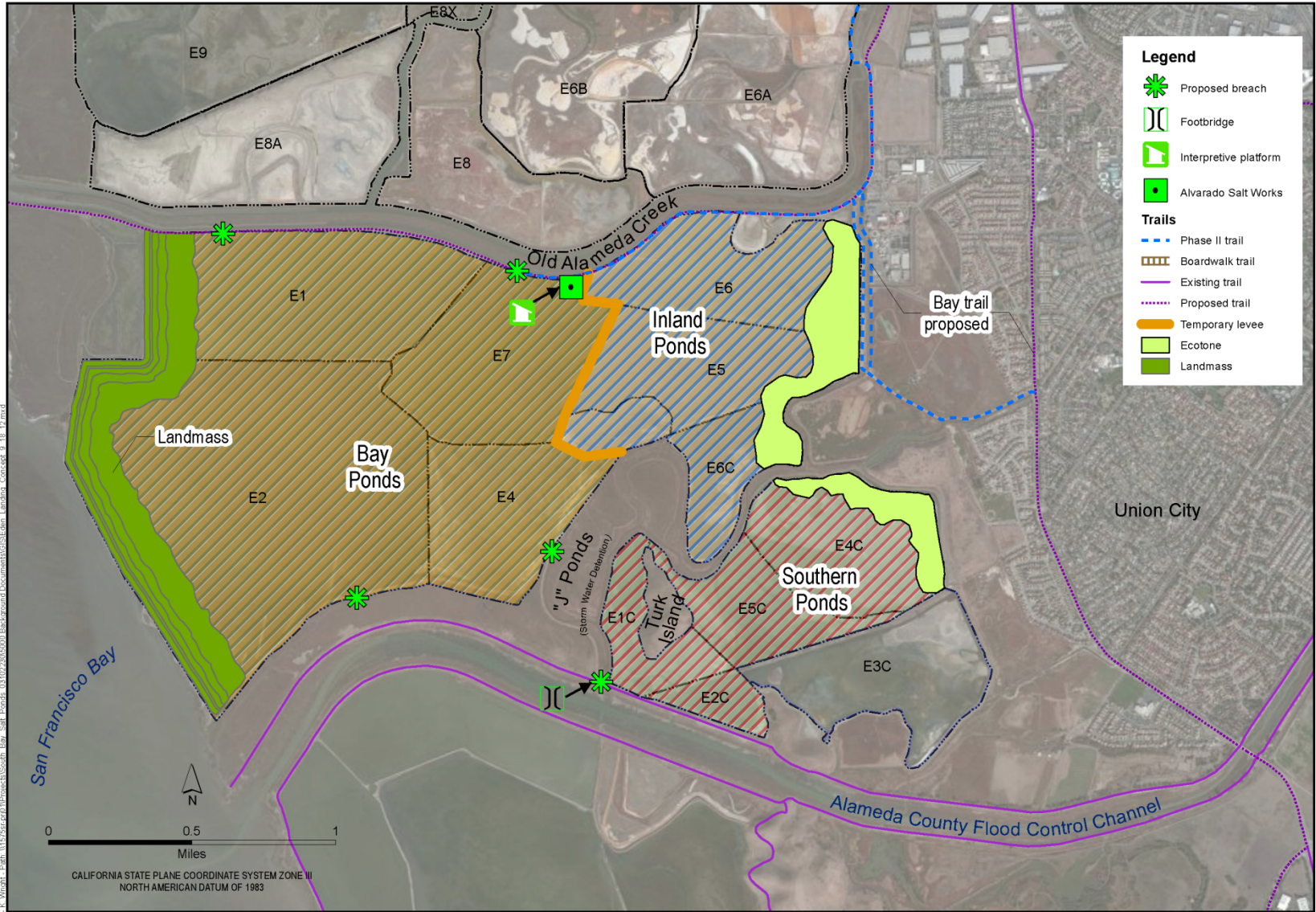
URS Oakland CA - K. Wright - Path: \\1575r\proj\11\Projects\South_Bay_Salt_Ponds_0310220\5000_Background_Documents\GIS\Alviso_Mt_View_Ponds_Concept_9_21_12.mxd



SOUTH BAY SALT PONDS
 ALVISO: MT. VIEW PONDS
 SANTA CLARA COUNTY, CA

DATE OF PREPARATION: 9/18/2012
 DRAFT, FOR INTERNAL USE ONLY
 URS PROJECT NO. 26818346

DRAFT PREFERRED ALTERNATIVE
ALVISO POND COMPLEX-
MT. VIEW PONDS



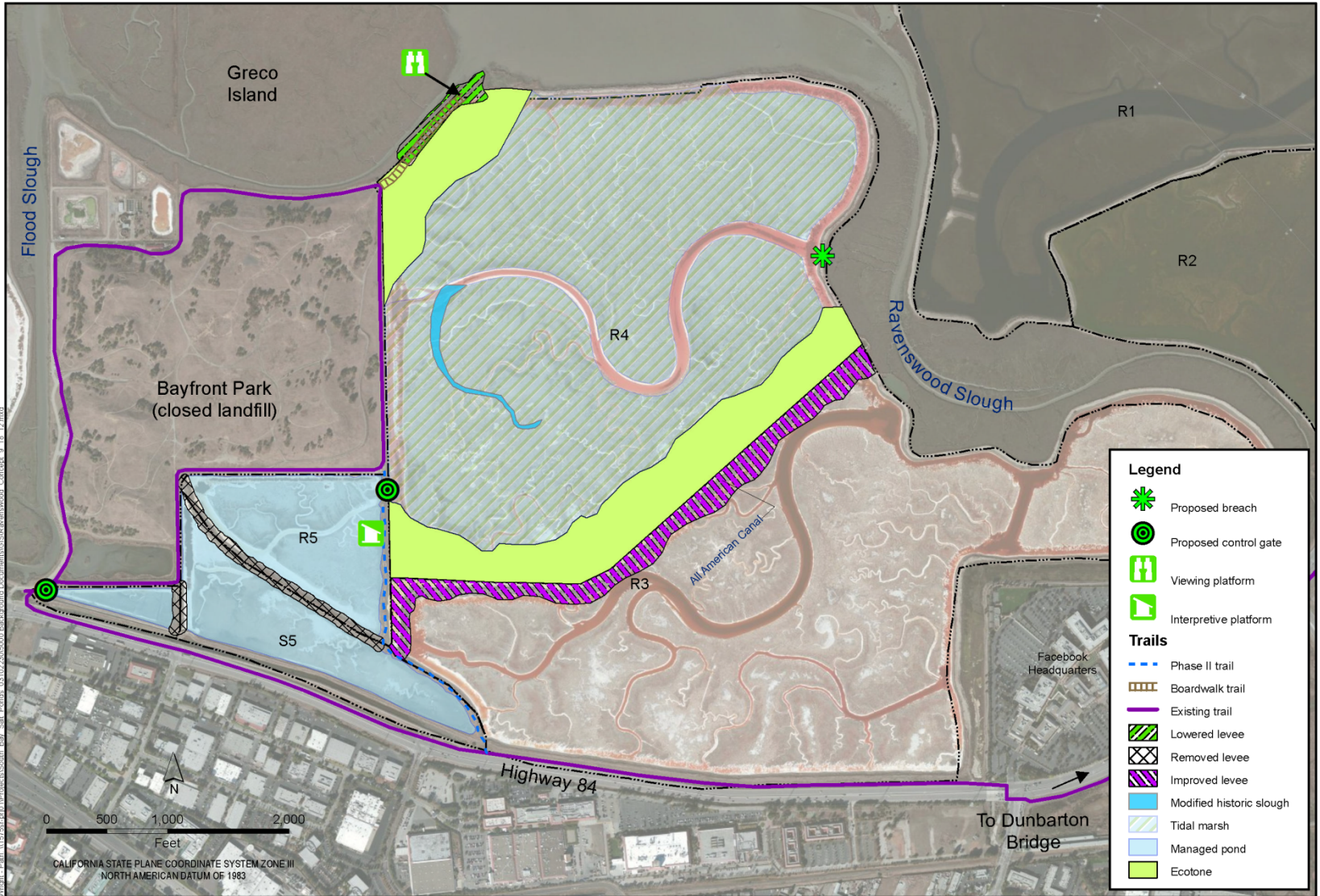
URS Oakland, CA, K. Wright, Path: \\1575rser01\Projects\South Bay Salt Ponds_031023045000 Background Documents\GIS\Eden Landing_Concept_9_18_12.mxd



SOUTH BAY SALT PONDS
 EDEN LANDING
 ALAMEDA COUNTY, CA

DATE OF PREPARATION: 9/18/2012
 DRAFT, FOR INTERNAL USE ONLY
 URS PROJECT NO. 26818346

**DRAFT PREFERRED ALTERNATIVE
 EDEN LANDING POND COMPLEX**



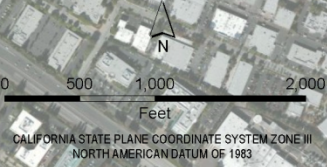
URS Oakland, CA - K. Wright - Path: \\1575r\proj\1\Projects\South_Bay_Salt_Ponds_03102012\5000_Background Documents\SR_Ravenswood_Concept_9_18_12.mxd



SOUTH BAY SALT PONDS
 RAVENSWOOD
 SAN MATEO COUNTY, CA

DATE OF PREPARATION: 9/18/2012
 DRAFT, FOR INTERNAL USE ONLY
 URS PROJECT NO. 26818346

**DRAFT PREFERRED ALTERNATIVE
 RAVENSWOOD POND COMPLEX**



Got Mud ?



Eric Mruz

Don Edwards San Francisco Bay National
Wildlife Refuge

Eric_Mruz@fws.gov